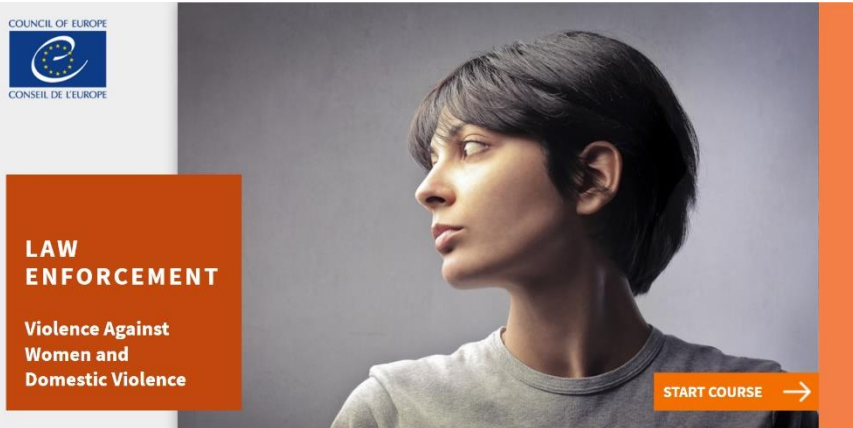


Council of Europe HELP online course on Violence against Women and Domestic Violence for Law-enforcement



Available for free
on the HELP online platform
help.elearning.ext.coe.int

Length: approximately **6 hours**

Take the course in English



Statement of accomplishment



Background and aim

Law enforcement plays a central role in addressing violence against women and domestic violence and in preventing its re-occurrence. Responses need to be efficient and tailored to the needs of victims and the risk of perpetrators.

In responding to violence against women and domestic violence, it is essential that law enforcement professionals are **familiar with the human rights dimension** of countering violence against women and are trained on an effective victim-centred response to victims and how to interact with perpetrators.

Drawing on the experience of several European police and law enforcement services including Denmark, France, Portugal, Slovenia and Sweden, and based on the European main international treaty: the [Council of Europe Convention on Preventing and Combating Violence against Women](#) (also known as the Istanbul Convention) and the monitoring work of the [Group of Experts on Action against Violence against Women and Domestic Violence](#) (GREVIO), the Council of Europe has developed **a new online course on Violence against Women and Domestic Violence targeting law enforcement**.

Through the course, law-enforcement professionals can learn theoretical and practical concepts related to violence against women, its many forms and impact in victims and society at large. Participants will also see guidelines on how to respond to cases of violence against women and domestic violence quickly and effectively, techniques to interview victims and perpetrators as well as practical steps by first responders, investigators, etc.

Target groups

The course is primarily intended for **law-enforcement officials**. It can also be used by other first line professionals dealing with cases of violence against women and domestic violence (social or health professionals), civil society organisations, students and other target groups.

Course structure

The course contains **3 substantive modules** and has an estimated learning time of **6 hours**.

Module 0: Introduction

Welcome message, navigation instructions, course authors and course target group

Module 1: Understanding Violence Against Women and Domestic Violence

Key concepts and definitions. Violence against women and its different forms. What is domestic violence. Impact on victims. Consequences for society: costs of VAW and DV.

Module 2: Effective law enforcement responses in addressing violence against women and domestic violence

Principles of law enforcement response. Confronting stereotypes and professional bias. First contact with victims. At the scene of the incident/crime. At the police station. Investigation, evidence and reporting to prosecutors.

Module 3: Assessing Risk of Violence Against Women and Domestic Violence

Risk assessment. Risk management. Police co-operation. Case study.

How to access the course?

You will need to create **an account** on the HELP online platform (follow ► [this video https://vimeo.com/399899070](https://vimeo.com/399899070) to see how). Then you can access directly the online course in English:

► <https://help.elearning.ext.coe.int/course/view.php?id=4999>

Check the HELP online Platform for other available language versions.

Once you have completed the course, you can print out a HELP 'statement of accomplishment'.